



VARIETY CRUISES



CLASSICAL GREECE 2020

ABOARD THE 21-CABIN MEGA YACHT *HARMONY G*

APRIL - OCTOBER 2020 | 8-day cruises

Fridays - From Athens to Athens, Greece

A cruise voyage unraveling the wonders of Classical Greece, through the Aegean Sea to the Peloponnese mainland.

Highlights include:

Santorini · Mykonos · Delos · Crete · Hydra · Nafplion · Monemvassia · Kea · Kythira



THE HARMONY G MEGA YACHT

The **M/Y HARMONY G** is a modern elegant yacht with a sleek high-tech look very similar to the private yachts to be found in the famous ports of the world.

GENERAL INFORMATION:

Length: 53 m

Launched: 2001 | Renovated: 2013

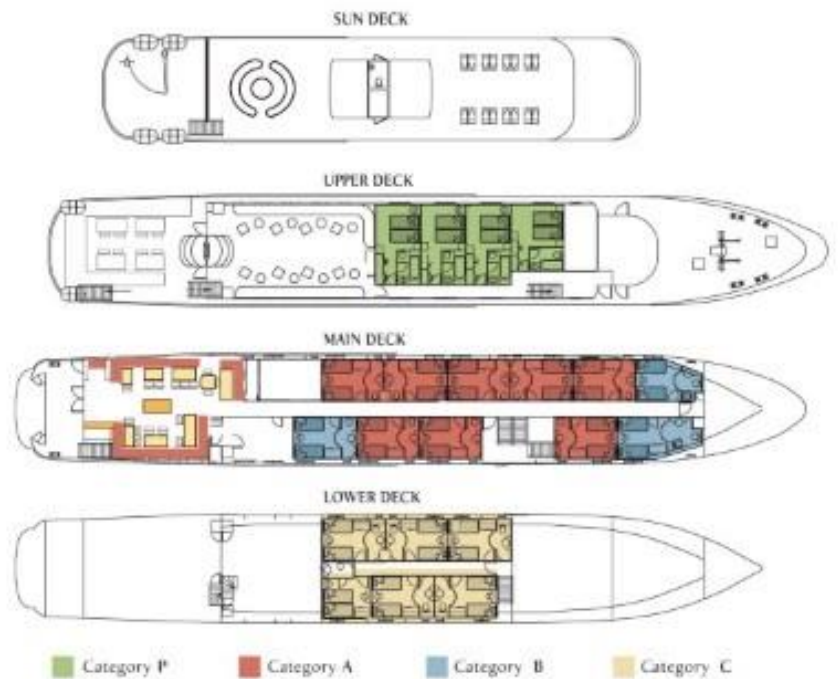
Cabins: 21

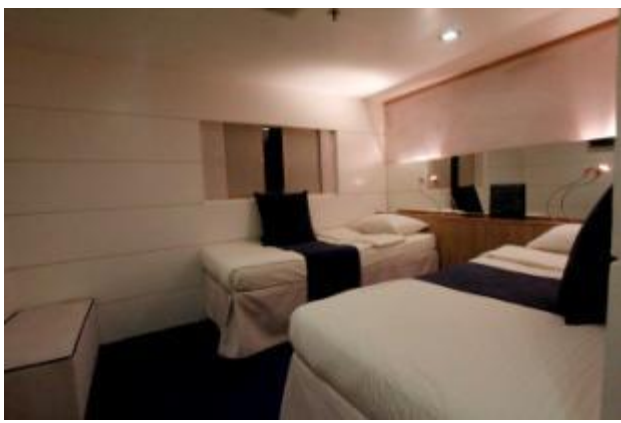
Capacity: 44 passengers

Crew: 16-18

The **M/Y HARMONY G** is a 53 meter/21 cabin elegant yacht that was launched in 2001 and renovated in 2012-13. This sleek high-tech looking yacht complies with the most stringent SOLAS safety regulations

Service on board is provided by your Captain, the Cruise Coordinator and your experienced Marine and Hotel crew members. Service will be attentive or unobtrusive according to your requirements and priority is always given to the safety and comfort of passengers. Organized excursions are available for most ports of call and can be pre-booked or reserved 24 hours in advance.





THE MEGA YACHT HARMONY G

CABIN SPECIFICATIONS:

The 21 cabins of the M/Y HARMONY G are located on Upper Deck (4 cabins), on Main Deck (11 cabins) and on Lower Deck (6 cabins). They are upscale and intimate, decorated with soft color furnishing. The cabins are equipped with twin or queen size beds, with two of the cabins being triples, and have large windows (two portholes on the Lower Deck). All cabins offer en suite bathrooms with shower, flat-screen TVs, CD/DVD players, music channels, mini fridges, hairdryers, individually controlled A/C and safe deposit boxes.

LIFE ON BOARD

During the day, life on board centers around the Bar Lounge and Dining Room at the Main Deck and meals are also served "al fresco" depending on the weather. The Captain will drop anchor at secluded bays and beautiful uninhabited islands where, weather permitting, guests enjoy swimming, snorkeling, kayaking. The Mega Yacht accommodates all guests at one single seating and provide a high standard of cuisine, always with some local flavor.

MAIN DECK LOUNGE & DINING ROOM

The classy dining room is surrounded by large windows providing beautiful views of the ports of call. The spacious dining room seats all passengers in a single, unassigned seating and food is served at the table or displayed on the state of the art hot & cold buffet which also includes a "a la minute cooking" section.

UPPER DECK LOUNGE AREA & DINING ROOM

The interior lounge has relaxing couches and comfortable lounge chairs where you can have a drink and gaze out of the large windows into the breathtaking sceneries you are cruising to, read a book, watch television on the satellite TV or one of our documentaries on the next place you are visiting. Also located on the Upper Deck, the outdoor dining area provides beautiful views of the ports of call visited.

SUN DECK

The vessel features a Sun Deck with a sitting area to relax and enjoy unobstructed views and with ample Sun loungers' space to bask under the sun, read a good book or just gaze at the scenery.



Cruise Highlights include:

- Santorini with her famous sunsets, sugar cube villages and the historical site of Akrotiri
- Mykonos, the queen of the Aegean and nearby Delos, Apollo's sacred island, a breath-taking open air museum and UNESCO World Heritage site.
- Hydra, a truly authentic, unknown island.
- Crete, the largest island in Greece.
- Monemvasia, a "stone about to set sail"

CLASSICAL GREECE CRUISES 2020 ON THE M/Y HARMONY G

FRIDAY DEPARTURES · 7-NIGHTS/8-DAYS · **FROM ATHENS TO ATHENS, GREECE**

DAY 1 - FRIDAY	ATHENS- KEA GREECE	Embarkation at Marina Zea in Athens, between 2-3 pm. Enjoy a welcome drink and meet your crew and fellow passengers. Depart via Cape Sounion to Kea. Time at leisure to explore Kea's tiny port, Korrisia after dinner. Departure in the early hours for Delos. Overnight at sea.
DAY 2 – SATURDAY	DELOS- MYKONOS) GREECE	Optional morning tour to the unique archaeological site of Delos, antiquity's most sacred island. On to the port of Mykonos, with a swim stop on the way. Free afternoon and evening to enjoy the island's cosmopolitan lifestyle. Overnight in Mykonos.
DAY 3 – SUNDAY	SANTORINI GREECE	Noon arrival in Santorini (anchorage at Fira). Experience the stunning natural drama of the volcanic caldera. Optional tour to archaeological sites and typical villages with unique views over the Aegean Sea. Overnight sailing to Crete.
DAY 4 – MONDAY	RETHYMNON CRETE GREECE	Morning arrival at Crete's famous and lively port of Rethymnon. Optional tour to the ancient city of Knossos near Heraklion. Late departure for Kythira. Overnight at sea.
DAY 5 - TUESDAY	KYTHIRA) GREECE	Late morning swim stop and afternoon arrival to Kythira, a less known island gem now fast becoming a favourite among visitors to Greece. Evening at leisure to visit the picturesque main town of Chora and experience the subdued charms of this peaceful island. Overnight in Kythira.
DAY 6 – WEDNESDAY	MONEMVASSIA -NAFPLION) , GREECE	Early morning sailing to Monemvasia. Discover a remarkable medieval fortified town, with time at leisure to explore the uniquely preserved Byzantine and Venetian architecture and experience the beauty of the natural setting. Depart for Nafplion in the early afternoon, with a swim stop on the way. Evening arrival at Nafplion. The old quarter is charming, with narrow streets and characteristic period architecture. Also, impressive medieval fortifications can be seen in the port and crowning the hills above. Overnight in Nafplion.
DAY 7 – THURSDAY	HYDRA - MARINA ZEA- ATHENS) , GREECE	Optional tour to Mycenae, the powerful walled palace of Agamemnon, the Homeric Achaean king. Early afternoon departure for the island of Hydra. Time at leisure to explore this picturesque port town. Captain's Farewell Dinner. After midnight arrival at Marina Zea, Athens.
DAY 8 – FRIDAY	MARINA ZEA- ATHENS GREECE	Disembarkation after breakfast.

) OVERNIGHT IN PORT

Itineraries can be changed at the discretion of Variety Cruises and of the Vessel's Captain in case of adverse weather conditions - winds of 6/7 beaufort or more depending on the vessel- on port authorities not allowing a vessel to leave port or in case of other extraordinary conditions. Such itinerary changes do not entitle automatically passengers to any refunds but Variety Cruises guarantees that passengers are disembarked at the advertised port of disembarkation on time for their flights.

CLASSICAL GREECE CRUISES 2020 - SAILING DATES & GROSS EURO RATES	
<u>From Athens, Marina Zea</u> <i>Friday Sailings</i>	Apr: 17, 24 May: 01, 22, 29 June: 05, 19, 26 July: 17, 24, 31 Aug: 07, 28 Sep: 04, 18, 25 Oct: 09, 16, 23
CABIN CATEGORIES	Official Gross EURO Rates per person in DBL/TWIN
Cat C Lower Deck, Twin or Double bedded Cabins	€ 2,400
Cat B Main Deck, Twin bedded Cabins	€ 2,850
Cat A Main Deck, Twin bedded Cabins	€ 3,300
Cat P Upper Deck, Double or Twin bedded Cabins	€ 3,700
Single Supplement	60%
3rd Person in Cat C	30%
Children 7-10 years old in triple cabin w/2 adults in Cat C	50%
Children 11-16 years old in triple cabin w/2 adults in Cat C	35%
Port Charges	€ 280

10% EARLY BOOKING DISCOUNT TO ALL RESERVATIONS UNTIL JANUARY 31, 2020 – VALID FOR APRIL – OCTOBER 2020 SAILINGS, EXCEPT FOR SEPTEMBER 2020.

EBD Conditions & Restrictions

- Bookings must be secured by paying upon confirmation 35% deposit on cruise fares per passenger.
- Balance - max 30 days before departure.
- All reservations are on request and on first-come-first-served basis.
- EBD will apply for maximum 5 cabins. For 6 paying cabins or more, general group offer will apply.
- **THEY DO NOT APPLY FOR ANY EXISTING BOOKINGS!!**
- They do not apply on group bookings.
- Port charges are excluded from these discounts.
- Please mention "EBD SUMMER 2020" at the moment of your booking. Otherwise, Full Rates will apply.
- Offers cannot be combined with any existing or future offers.
- EBD is subject to occupancy levels and maybe withdrawn at any time.
- The EBD is valid for all reservations made until **January 31, 2020, for all sailing dates except for September 2020 sailings.**

September 25, 2019

A/ Cruise fares are per person and week and include

- Accommodation in double or twin cabins with private SH/WC & air conditioning.
- **Half-board:** Buffet breakfast and one meal daily, including a Welcome Cocktail, a Greek night Evening, fun BBQ, weather permitting) and Captain's Dinner.
- Regular (filter) coffee, tea and drinking water free all day.
- Use of fishing and snorkelling equipment (subject to availability).
- English-Speaking Cruise Escort.

Not included:

- Beverages (except those mentioned above).
- Shore excursions on the islands or other land arrangements.
- Crew tips.
- Passenger personal expenses
- Wi-Fi (available at charge)

B/ Conditions and restrictions

PROOFREADING

Tour Operators featuring our Cruises in their Catalogue or Internet site by itinerary, vessel's description and images, will send **VARIETY CRUISES** a draft for error-checking of the contents prior publication as well as two brochure copies when printed. In order to secure correct information given to our clients and keep our high customer satisfaction levels. **Variety Cruises will not bare any responsibility for inaccurate information or misrepresentation of our vessels or cruise itineraries without having accepted a draft prior to the brochure going to print or internet page published.**

PAYMENT

25% deposit is required 7 days from confirmation.

75% Balance of payment no less than 60 days prior to day of embarkation.

CANCELLATIONS

240 days to 120 days from embarkation: €120 / US\$140 Administration fee (per booking)*

119 to 90 days from embarkation 15% of the cruise fare

89 to 60 days from embarkation 25% of the cruise fare

59 to 30 days from embarkation 50% of the cruise fare

29 to 00 days from embarkation 100% of the cruise fare

Cancellations must be confirmed by **VARIETY CRUISES** in writing in all cases.

***In case of cancellation the administration fee per booking will be converted to a future cruise credit redeemable on bookings made up to 12 months after cancellation, valid for any cruise and date of cruise.**

AMENDMENTS

There may be a charge for amendments of cruise date or decreasing pax number received less than 60 days prior to sailing. Amendments must be confirmed by **VARIETY CRUISES** in writing.

CHILD REDUCTION

Children between the ages of 7-10 sharing a cabin with two paying adults receive a 50% discount. Children between the ages of 11-16 sharing a cabin with two paying adults receive a 35% discount. Port taxes are not discounted.

NOT INCLUDED IN CRUISE FARE

Such personal expenses as drinks (other than included in the rate), laundry, spa-where applicable-, boutique items and gratuities, (gratuities are optional but as a rule, satisfied clients are expected to give to the captain, at the end of the cruise, approximately Euro 13-15 per person per day for distribution among all crew members) medical expenses, port taxes, shore excursions (shore excursions are proposed and arranged on board by the tour leaders), use of the on board Wi-Fi (available at a charge), expenditures incurred ashore, and anything not mentioned in cruise program.

###

September 25, 2019